



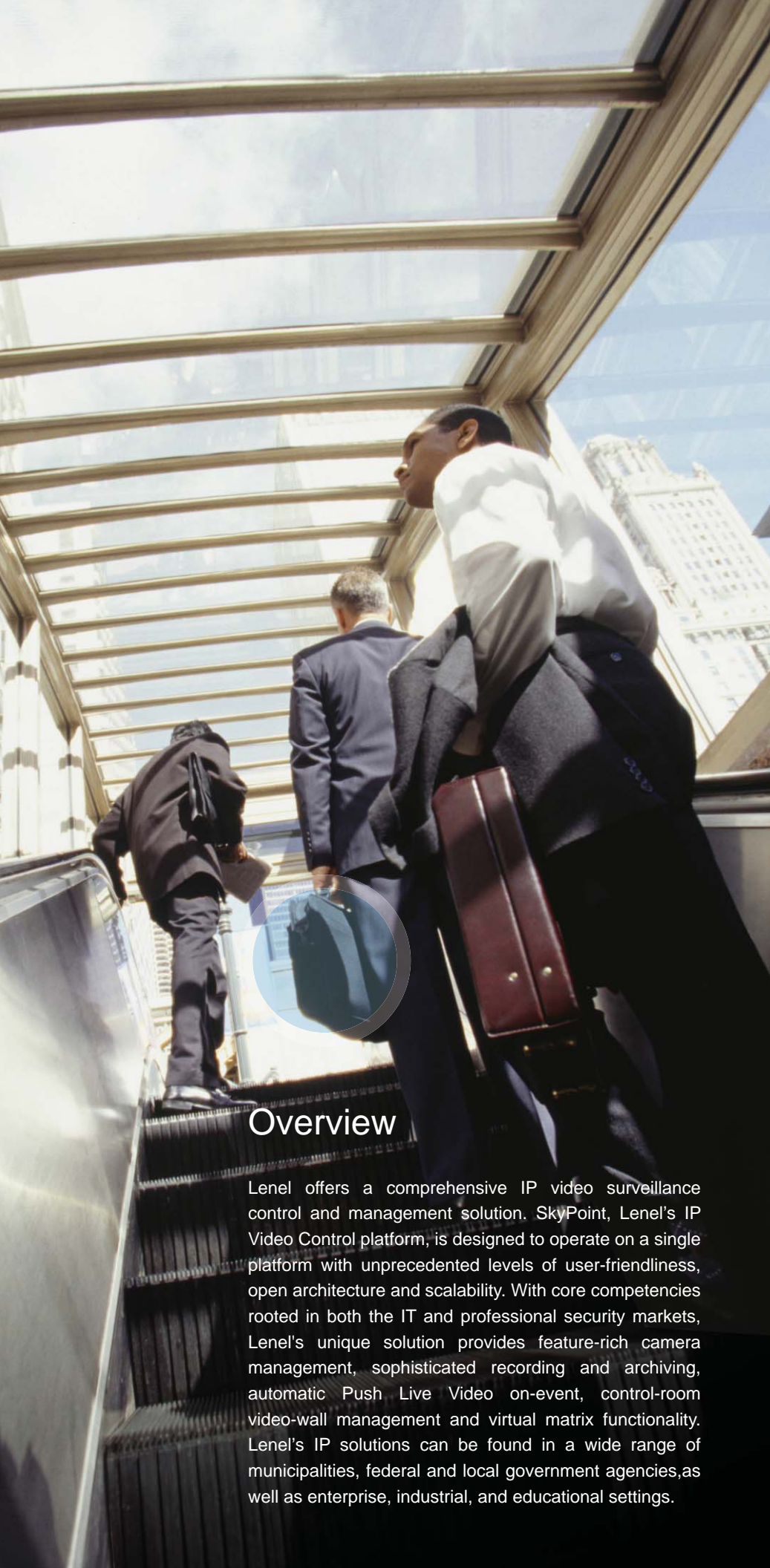
**SkyPoint**<sup>™</sup>  
Powered by OnSSI

PERPETUAL INNOVATION



**LENEL**

A UTC Fire & Security Company



## Open Architecture, Non-Proprietary Technology

### Universal Camera Support

SkyPoint works with the OnSSI NetDVMS Network Video Recorders, and will soon be available with the Lenel Network Video Recorder (LNVR). This allows the use of the widest range of video cameras available in the industry, including cameras and encoders from both leading and niche manufacturers. Nearly any retrofit or expansion is possible!

### Multiple Recording Platforms

SkyPoint's open-architecture enables monitoring and investigating video and audio data from any of OnSSI's market-leading recorders: NetDVMS enterprise-class platforms; the NetDVR medium- to large-scale single-server; and ProSight-SMB for small to medium businesses.

### Multiple Video Clients

Video from multiple networked recorders can be monitored live, reviewed, investigated and exported via multiple video clients - desktop, web, handheld and video wall virtual matrix.

## Overview

Lenel offers a comprehensive IP video surveillance control and management solution. SkyPoint, Lenel's IP Video Control platform, is designed to operate on a single platform with unprecedented levels of user-friendliness, open architecture and scalability. With core competencies rooted in both the IT and professional security markets, Lenel's unique solution provides feature-rich camera management, sophisticated recording and archiving, automatic Push Live Video on-event, control-room video-wall management and virtual matrix functionality. Lenel's IP solutions can be found in a wide range of municipalities, federal and local government agencies, as well as enterprise, industrial, and educational settings.

# Integration and Intelligence

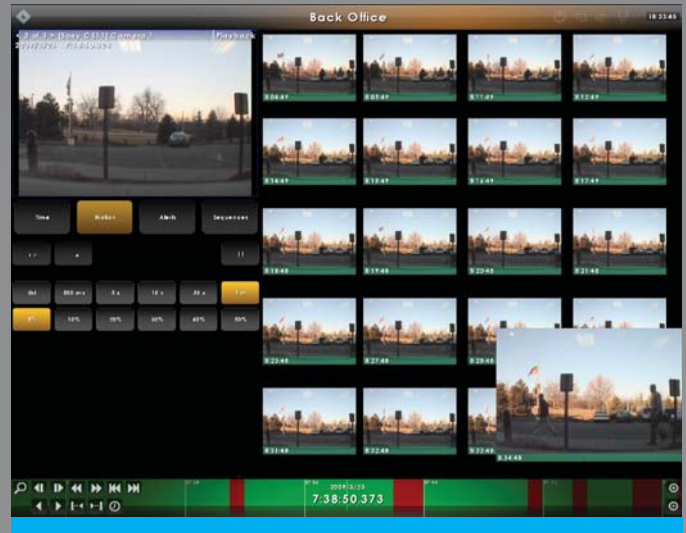
Advanced video content analytics provide automated detection of events, objects and behaviors. Content analytics can be applied to both live and recorded video, with multiple detectors and unlimited detection rules per camera, and enable interoperability with analytics on edge devices. On-event push video alerts can be automatically or manually pushed to designated alert views, from which they can be further investigated and exported as evidence. By receiving filtered video, fewer operators are needed to monitor a far greater number of locations, greatly reducing costs while improving overall efficiency.

## Advanced Human Engineering, Intuitive Functionality

### The SkyPoint Client (Patent Pending)

We set out to rethink the way surveillance video is accessed, monitored and investigated. The result was the SkyPoint Client, an extremely easy-to-use controller platform. The SkyPoint Client's anticipatory interface seamlessly reacts to the user's needs and actions at any given moment. While not required, SkyPoint is designed to leverage touch-screen technology. Its simplicity and advanced human engineering enable operators to reach proficiency within minutes of training. Touch, drag, slice and send. It's that easy.

**At Your Fingertips.** Camera and camera group icons within scalable, linkable maps allow easy navigation to cameras and sites, with no need for camera or location codes. Any camera or camera group in the system can be instantly sent to any display monitor or video wall, local or remote, simply by



dragging its icon to the monitor panel.

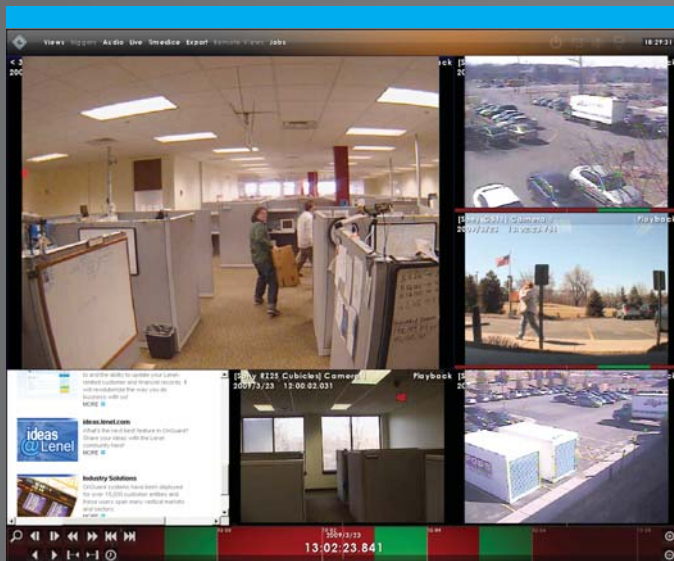
**Investigation.** SkyPoint offers a wide array of unique investigation tools. Camera views seamlessly transition between playback and live monitoring, and can be investigated using optical PTZ, as well as digital PTZ, into both live and recorded video - just draw a square on the desired object or area.

Drag the kinetic timeline to instantly access a recorded event, and apply the most sophisticated motion Smart Search algorithm - even within digitally-zoomed recorded images. SkyPoint's Smart Search can be configured for motion sensitivity, size of object, and time spacing, greatly reducing false detection rates.

**Time Slicing.** An unattended suitcase is reported at a crowded commuter terminal. Emergency procedures are set into action. You need video of the moment the suitcase was placed on the floor - and you need it now. However, with hundreds of motion detection events recorded due to pedestrian traffic, there's no way you can sift through them all.

SkyPoint's revolutionary Time Slicing feature enables immediate access to recorded events. Automatically generated time-interval thumbnails allow drilling down in time to identify the exact moment an event occurred. In a matter of seconds you can access the moment of the event, apply digital PTZ and motion detection, export a video clip and distribute it to law enforcement and other users.

**Shared Event Handling.** With SkyPoint, your surveillance system can be controlled from multiple locations with unlimited redundancy, even operating on multiple networks. All operator locations, from desktop-based to command center video wall, are connected to a common dynamically-updated alerts database, allowing shared handling of events and greatly enhancing productivity.



# SkyPoint™, Lenel's intelligent IP video surveillance management platform, represents a quantum leap in video detection, analysis, delivery and response.

Securing a physical environment requires an integrated approach, pointed toward detection, analysis, delivery and response. SkyPoint is a comprehensive intelligent IP video surveillance solution. It provides the tools to effectively and automatically identify incidents, notify and inform corporate security personnel on and off site, and manage the response to a security breach or incident. And SkyPoint enables organizations to generate a return on investment (ROI) while leveraging video intelligence to benefit their marketing, merchandising, operations and other department initiatives.

SkyPoint's non-proprietary, open architecture solution enables integration of comprehensive physical security and video analytic functionality. Fewer operators effectively monitor several to hundreds and thousands of cameras in control room and desktop environments, substantially reducing operating costs.

With significant advancement in human engineering, SkyPoint's touchscreen, map-based interface delivers powerful investigation tools providing immediate access and response to captured events.

Powerful, mission-specific third party modules such as access control, fire panels and contact closure integrate with the SkyPoint platform and desktop or PDA video client interfaces, thus extending the functionality of IP-based video surveillance. Users are able to choose best-of-breed components as they evaluate and identify the appropriate physical security surveillance solution.

As a continually evolving needs-based intelligent IP video surveillance solution, SkyPoint is designed to meet the operational requirements of users today, and assure their ability to move forward in the future.

[www.lenel.com](http://www.lenel.com)

Lenel Systems International, Inc.  
1212 Pittsford-Victor Road  
Pittsford, New York 14534 USA  
Tel 585.248.9720 Fax 585.248.9185  
[www.lenel.com](http://www.lenel.com)

© 2009 Lenel Systems International, Inc.